



A detailed TEM and SEM study of Ni-base alloys oxide scales formed in primary conditions of pressurized water reactor

Mohamed Sennour^{a,*}, Loïc Marchetti^b, Frantz Martin^b, Stéphane Perrin^b, Régine Molins^a, Michèle Pijolat^c

^a MINES, ParisTech, Centre des Matériaux, UMR CNRS 7633, B.P. 87, 91003 Evry Cedex, France

^b CEA, DEN, DPC, SCCME, Laboratoire d'Etude de la Corrosion Aqueuse, F-91191 Gif-sur-Yvette, France

^c LPMG-UMR CNRS 5148, Centre SPIN, Ecole Nationale Supérieure des Mines, 158 Cours Fauriel, F-42023 Saint-Etienne, France

ARTICLE INFO

Article history:

Received 29 June 2009

Accepted 11 May 2010

ABSTRACT

The oxide film formed on nickel-based alloys in pressurized water reactors (PWR) primary coolant conditions (325 °C, aqueous media) is very thin, in the range of 1–100 nm thick, depending on the surface state and on the corrosion test duration. The nature and the structure of this scale have been investigated by Transmission Electron Microscopy (TEM) and Scanning Electron Microscopy (SEM). TEM observations revealed an oxide layer divided in two parts. The internal layer was mainly composed of a continuous spinel layer, identified as a mixed iron and nickel chromite ($\text{Ni}_{(1-x)}\text{Fe}_x\text{Cr}_2\text{O}_4$). Moreover, nodules of Cr_2O_3 , with a size about 5 nm, were present at the interface between this spinel and the alloy. No chromium depletion was observed in the alloy, at the alloy/oxide interface. The external layer is composed of large crystallites corresponding to a spinel structure rich in iron ($\text{Ni}_{(1-z)}\text{Fe}_{(2+z)}\text{O}_4$) resulting from precipitation phenomena. SEM and TEM observations showed a link between the nucleation and/or the growth of crystallites of nickel ferrite and the crystallographic orientation of the substrate. A link between the presence of surface defects and the nucleation of the crystallites was also underlined by SEM observations. Partially hydrated nickel hydroxide, was also observed by TEM in the external scale. Based on these results, some considerations about the mechanism of formation of this oxide layer are discussed.

© 2010 Elsevier B.V. All rights reserved.

1. Introduction

The corrosion behavior of nickel-base alloys in high temperature and high pressure water were studied in order to simulate corrosion of steam generators (SG) of pressurized water reactors (PWR) in the primary circuit, i.e. in an aqueous medium at a temperature between 285–325 °C and a hydrogen concentration between 25 and 50 $\text{cm}^3 \text{kg}^{-1}$ (NTP). In these conditions, the passivity of these alloys is due to the formation of a protective oxide film, which acts as a diffusion barrier and consequently reduces the corrosion rate. In fact, the passive film reduces the release of corrosion products, as nickel cations, in primary water. ^{58}Ni released in the primary circuit is activated into ^{58}Co in the nuclear core under neutronic flux, increasing the global radioactivity of the primary circuit of PWR. For safety reasons for the maintenance staff, the control and restriction of the release of nickel species in the primary circuit is of crucial importance. Therefore the knowledge of the nature and the structure of passive films formed on these alloys is essential for a better understanding of the mechanisms governing the phenomena of oxidation and release.

Many published papers describe the oxide film growing on nickel-base alloys as having a duplex structure [1–8]. This duplex oxide has been described as an inner Cr-rich layer and an outer layer consisting of scattered octahedral Fe-rich crystals [2,5,8] attributed to precipitation phenomena, which occurs in saturated media [3,6]. The size of these crystallites varies in the range of 100 nm to 1 μm [5,9–12]. On the contrary, when corrosion tests were carried out in continuously cleaned and purified media, the crystallite density was drastically decreased [6] in agreement with unsaturated conditions. In these conditions, the duplex morphology was characterized as an internal Cr-rich layer and a thicker external layer rich in Cr and Ni [4,6].

If we consider that the duplex structure designation refers to a layer of scattered precipitated crystallites surmounting a continuous and protective oxide film, the question of a multi-layer structure for the protective oxide film can be asked. In this way, Machet et al. [5] suggests a Cr/Ni atomic ratio around two in the inner oxide film, consistent with the external layer described by Carrette et al. [4]. In a more recent paper [7], a duplex structure composed by an inner Cr_2O_3 layer and an outer $\text{Ni}(\text{OH})_2$ layer was suggested based on an XPS study. Some authors [8,10,12–14] also showed the presence of a chromium depleted layer in the alloy at the oxide alloy interface. Facing these different works, the

* Corresponding author. Tel.: +33 1 6076 3107; fax: +33 1 6076 3150.
E-mail address: mohamed.sennour@ensmp.fr (M. Sennour).

nature of the passive film formed on nickel-base alloys in PWR primary water conditions is still not well defined. The objective of this work is thus to obtain a better understanding of the passive film structure by using SEM and advanced TEM techniques.

2. Materials and methods

2.1. Materials

Two different alloys were investigated in this work. The first one is the Alloy 690. It is one of the typical Ni-base alloys used for the manufacturing of steam generators tubes. The second one is a “model” alloy called Ni–30Cr whose chromium content is close to the composition of Alloy 690 but Ni–30Cr was quasi iron free. As a consequence, this “model” material is ideal to study the role of iron on the structure of the oxide layer. The compositions of both alloys are given in Table 1. On Alloy 690, a complementary heat treatment has been performed with a tempering at 730 °C during 5 h and 30 min, followed by an air cooling. No heat treatment was performed on alloy Ni–30Cr.

The sample are coupons with dimensions of 30 × 20 × 2.5 mm whose surfaces were prepared and mechanically mirror-polished with SiC paper up to grade 1200, diamond paste up to 1 μm and alumina gel finish (OPA). Then samples were cleaned first with distilled water and then with an ethanol–acetone binary mixture in ultrasonic bath.

Scanning Electron Microscopy (SEM) observations, after electrolytic attack with an orthophosphoric acid solution, revealed a grain size about 25 μm for Alloy 690 and superior to 100 μm for alloy Ni–30Cr.

2.2. Corrosion experiments

The corrosion experiments were performed at 325 °C, under 155 bars in a recirculation autoclave with a flow rate of 17 L h⁻¹. This testing device is presented in broad outline on Fig. 1 and can be divided in three parts. The samples were exposed in the autoclave, in the high temperature (325 °C) and high pressure (155 bars) part of the experimental device.

Different corrosion durations were investigated, from 66 to 858 h. The aqueous solution contained 2 ppm lithium (LiOH) and 1000 ppm boron (H₃BO₃), in equilibrium with a hydrogen overpressure of 0.29 ± 0.02 bar. This overpressure ensures a dissolved H₂ concentration of 1.3 × 10⁻³ mol L⁻¹ at 325 °C (corresponding to a molar fraction of 3.4 × 10⁻⁵) and a low oxygen content (O₂ < 10 ppb).

Basically, the media under the hydrogen overpressure is injected from the tank and put at high pressure (155 bar) between a pump and an expansion valve (high temperature/high pressure and low temperature/low pressure parts). The pressurized water is then pre-heated at 325 °C before arriving in the autoclave where the samples are maintained at 325 °C and corroded for various periods. On the downstream side of the autoclave, the aqueous solution is cooled down and crosses a flowmeter, which regulates the pump, and the hydrogen concentration is measured by an orbisphere provided by Hach Ultra® (low temperature/low pressure part). The high pressure part of the recirculation loop ends with

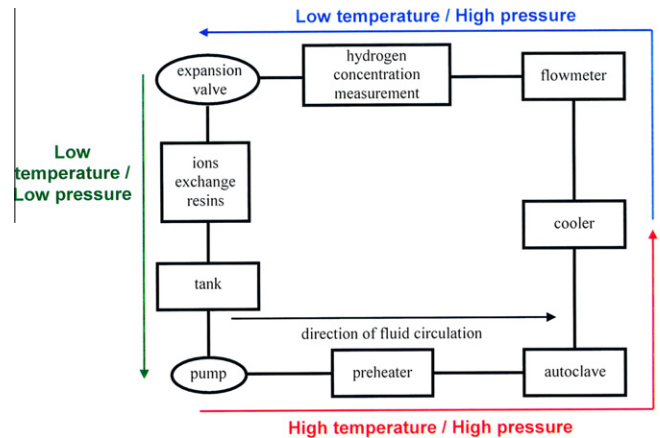


Fig. 1. Schematic representation of recirculation autoclave.

the expansion valve just before the ion-exchange resins (low temperature/high pressure part), which only works at low pressure (and low temperature). The aim of the ion-exchange resins is to maintain the concentration of metallic cations in the liquid phase as low as possible to avoid precipitation. Their efficiency is much dependent on the temperature. Optimizations have led to use them at 20 °C. However, experiments with two durations (164 and 858 h) were carried out under so-called “damaged conditions”, i.e. at 32 °C, temperature for which the ion-exchange resins efficiency was indeed lower.

2.3. SEM experiments

Two Scanning Electron Microscopes (SEM) have been used: a LEO 1450VP equipped with an Energy Dispersive X-ray analysis system (EDX), and a Karl Zeiss 1525 equipped with a field emission gun (FEG).

2.4. TEM experiments

Transmission Electron Microscopy (TEM) characterizations have been made on cross-section specimens. Before preparation, the sample was about 1 cm². Two bars of about 2.5 mm wide were cut along the plane of interest. Both bars were glued together with an epoxy resin, the surface of the oxide layers facing inwards so that it was protected from any damage, forming a sandwich, which was then cut again into slices of 0.5 mm thick. A slice was first mechanically thinned to about 10 μm of thickness using a precision tripod device in order to keep the sample absolutely horizontal. The sample was then mounted onto a copper grid and thinned again to a thickness of a few nanometers from both sides by low-angle (±7°) ion milling with 4 keV argon ions using Gatan® Precision Ion Polishing System (PIPS). Final milling was performed at reduced beam energy (2 keV) and at reduced incident angles (±4°) to remove most of the visible ion damage.

TEM investigations have been carried out on a Tecnai F20-ST field emission gun microscope, equipped with an Energy Dispersive X-ray (EDX) device, Gatan Imaging Filter (GIF) and owning

Table 1
Compositions (in wt.%) of alloys 690 and Ni–30Cr studied in this work.

Alloys	Contents of different alloying elements in wt.%												
	Ni	Cr	Fe	C	Co	Mn	Al	Ti	Cu	Si	S	P	
690	59.31	29.20	9.94	0.018	0.014	0.31	0.13	0.27	<0.002	0.27	<0.0005	0.007	
Ni–30Cr	69.15	30.35	0.25	0.002	–	0.02	0.06	0.04	–	0.1	0.0009	–	

Scanning Transmission Electron Microscopy (STEM) capabilities. STEM has been combined to High-Angle Annular Dark-Field (HAADF) technique to produce chemical contrast images formed using electrons diffracted at high angle (>40 mrad) and whose the intensity is proportional to the Z atomic number of elements composing the sample. The spatial resolution of these images depends on the probe size, which was about 1 nm in our experiments. EDX analysis has been performed using line-scan mode to investigate local chemical composition variation over oxide layers. High-Resolution Transmission Electron Microscopy (HRTEM) images have been obtained on CCD camera and analyzed using Fast Fourier Transform (FFT) technique to investigate crystallographic details of oxide layers.

3. Results

Following paragraphs present results of SEM and advanced TEM investigations (HRTEM, HAADF, EDX) carried out on Ni–30Cr alloy and on Alloy 690 exposed for different times to a PWR simulated primary water.

3.1. SEM observations

The time evolution of the morphology of the external layer formed on Alloy 690 exposed to a PWR type primary water, for the optimal working conditions of the ion-exchange resins, is

presented in Fig. 2a–c. After 66 h exposition to the media, the surface appears clean. For exposition times from 190 to 406 h, small crystallites are detected, but even if their number and size increase with exposition time, their presence in the working conditions of the recirculation loop keeps sporadic. EDX measures show that these crystallites are consistent with iron and nickel oxides.

On the contrary, for the two corrosion tests carried out under “damaged conditions” of the ion-exchange resins, the number and size of crystallites on the surface are much higher: the surface states at similar exposition time for both conditions are shown in Fig. 2b and d. These results underline the link existing between the amount of nickel and iron cations in the test media and the formation of the external layer. Moreover, Fig. 2d and e evidence a link between the crystallographic orientation of the alloy grains and the nucleation and growth of the crystallites. The growth difference of the crystallites formed on two different grains of the substrate is indeed clearly established (Fig. 2e). Observation of the surface of the Ni–30Cr alloy (Fig. 2f) leads to the same comment: crystallites are also present on the surface for long exposition times and under “damaged conditions”, which reveals that the crystallites may form by precipitation of the cations contained in the media (Ni–30Cr alloy is almost free of iron). It also shows that the crystallites preferentially nucleate along polishing rays on the surface, thus evidencing the influence of substrate surface defects on their nucleation.

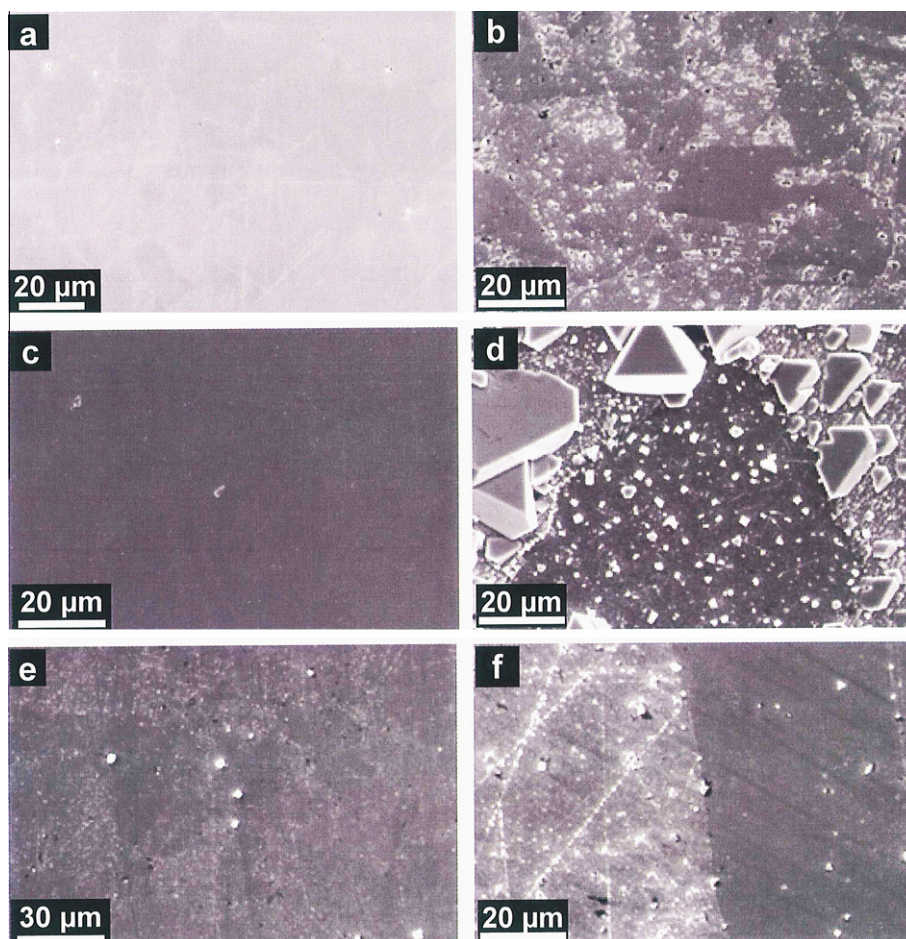


Fig. 2. SEM observations of the surface of Ni-base alloys at different exposure times and for different working conditions: (a–c) Alloy 690 exposed to primary water at optimized working conditions of the ion-exchange resins, for 66 h (a), 190 h (b) and 406 h (c); (d) surface of Alloy 690 after 164 h in PWR simulated water with damaged conditions for the ion-exchange resins; (e) zoom in of the surface of Alloy 690 after 858 h in damaged conditions showing preferential crystallization and big crystallites; and (f) surface of Ni–30Cr alloy obtained after 858 h in damaged conditions.

3.2. TEM observations

3.2.1. Ni–30Cr alloy

3.2.1.1. 66 h corrosion test. Fig. 3a shows a HRTEM micrograph obtained on a cross-sectional specimen prepared from the Ni–30Cr alloy exposed 66 h in simulated primary water. The oxide layer can be distinguished between the residual glue particles and the underlying metal. It seems to form a continuous thin layer with an average thickness of 5 nm. It is worth noting that the measure of thickness on TEM images must be done keeping in mind that the image observed in the TEM is a projection of the specimen volume. This involves the superposition of microstructural characteristics in the projected image. This effect is all the more problematic as the sample is thick and the microstructure is changing along the viewing direction. In our case, we considered that the analyzed areas are thin enough allowing to neglect this effect.

In addition to the thin layer oxide, small nodules with size ranging between 5 and 10 nm have been regularly observed along the oxide/alloy interface. Analysis of local areas FFT diffractograms (Fig. 3b) allowed to identify them as Cr_2O_3 -structure oxides owing orientation relationship with respect to the neighboring matrix of the type:



3.2.1.2. 164 h corrosion test. Fig. 3c shows a HRTEM image of the oxide layer developed on Ni–30Cr alloy exposed 164 h. One can observe the finely grained aspect of the oxide external part where the internal part seems to be rather compact. Analysis of the rings-type FFT diffractogram (inset image) corresponding to the external oxide layer revealed atomic distance, which are in agreement with a partially hydrated nickel hydroxide, typically $\text{Ni}(\text{OH})_2 \cdot 0.75 \text{H}_2\text{O}$.

Using a nanometric probe size, line-scan EDX analyses were realized across the oxide scale and the underlying metal. Compositional profiles are plotted in Fig. 3d. It is worth noting that element concentrations should be regarded as qualitative since only approximate corrections were applied for O–Cr interference and oxygen X-ray absorption. Concentration profiles reveal that the external oxide layer is rich in nickel, which is in agreement with a nickel hydroxide owing it is impossible to detect hydrogen to confirm the $\text{Ni}(\text{OH})_2 \cdot 0.75 \text{H}_2\text{O}$ stoichiometry. However, the internal part of the oxide is rather Cr enriched, which may be attributed to a nickel chromite ($\text{Ni}_{(1-x)}\text{Cr}_{(2+x)}\text{O}_4$). On the other hand, local EDX

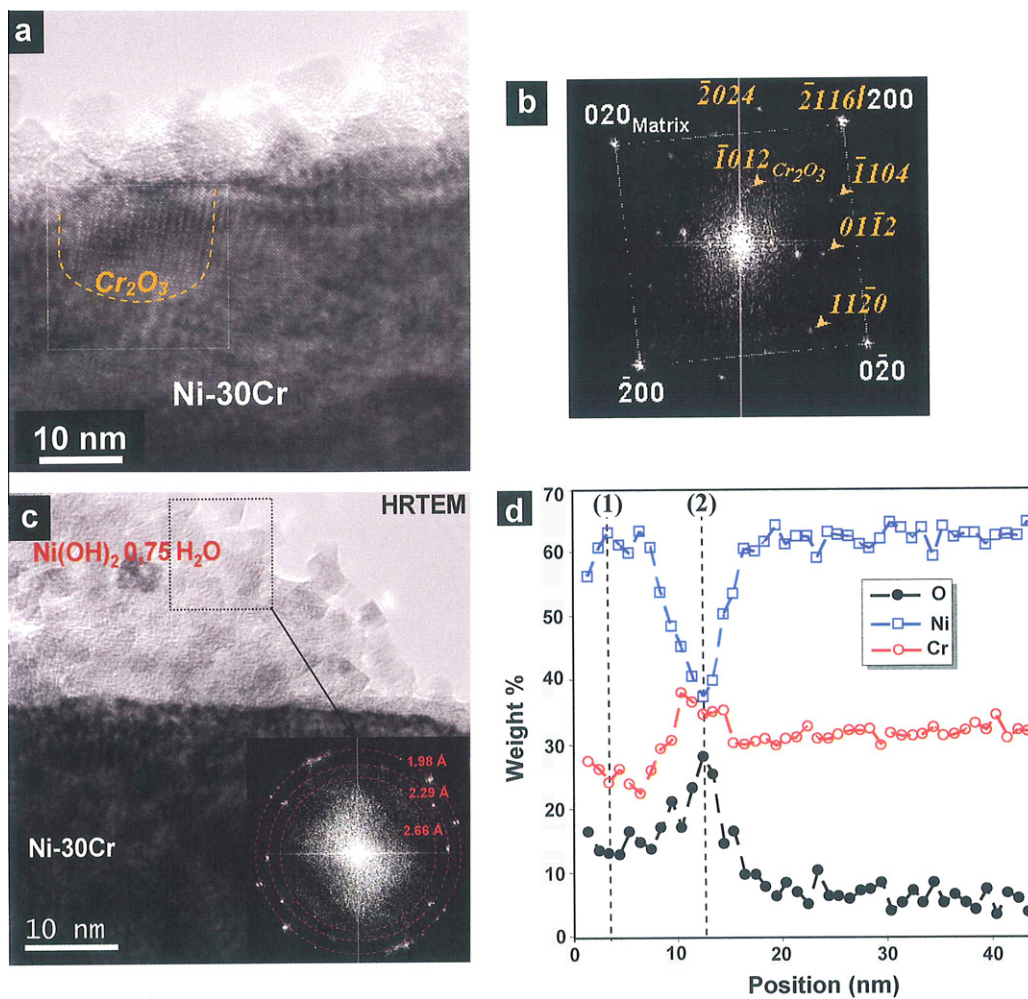


Fig. 3. (a) HRTEM image of the oxide layer developed on Ni–30Cr alloy exposed 66 h in PWR simulated primary water. Presence of crystalline nodules at the metal/oxide interface is evidenced (dashed-lines). (b) Fourier transform diffractogram of the framed area on image (a). Nodules are clearly identified as Cr_2O_3 -structure oxides. (c) HRTEM image obtained on the oxide layer developed on Ni–30Cr alloy exposed 164 h showing the granular aspect of the oxide layer. The analysis of a local area (framed zone) Fourier transform diffractogram (inset image) is in agreement with a hydrated nickel hydroxide $\{\text{Ni}(\text{OH})_2 \cdot 0.75 \text{H}_2\text{O}\}$. (d) EDX compositional profiles obtained across the oxide layer and the underlying metal using ~ 1 nm probe size (the atomic compositions are given at the points marked (1): 42%Ni, 18%Cr and 40%O and (2): 16%Ni, 23%Cr and 61%O).

analysis carried out on oxide penetrations revealed a high Cr content with element concentrations in agreement with Cr_2O_3 composition, which may be linked to the Cr_2O_3 -structure nodules previously observed along the oxide/alloy interface in the specimen exposed 66 h. Finally, no chromium depletion zone below the oxide scale was established.

3.2.1.3. 858 h corrosion test. TEM investigations carried out on the specimen exposed 858 h revealed a duplex oxide scale. The external layer is composed of scattered large particles with sizes varying from few tens to several hundred of nanometers (Fig. 4a). Conversely, the internal layer exhibits a rather compact and continuous aspect with a quite constant thickness around 20 nm. Furthermore, occasional penetrations of oxide in the matrix were observed (black arrow).

Crystallographic characteristics of both layers were investigated via exploitation of HRTEM images local area FFT diffractograms (Fig. 4b). The image was obtained along the $[1-10]$ matrix zone axis on the oxide/matrix interface. The analysis of the corresponding FFT diffractogram (inset image) highlighted the NiCr_2O_4 -structure of the internal oxide layer and established parallel orientation relationships with respect to the alloy. In the same manner, external large oxide particles were identified as spinel NiFe_2O_4 -structure oxides (Fig. 4c). However, it was not possible to establish

orientation relationship between both internal and external oxide layers.

The EDX compositional profiles performed along oxide scale highlighted the $\text{Ni}_{(1-2)}\text{Fe}_{(2+2)}\text{O}_4$ composition, very close to NiFe_2O_4 , of the outer large crystallites (Fig. 4d) and where the presence of a small amount of chromium is not excluded. The internal layer is Cr enriched and exhibits a Fe concentration gradient. Atomic concentrations are in agreement with an iron and nickel mixed chromite ($\text{Ni}_{(1-x)}\text{Fe}_x\text{Cr}_2\text{O}_4$). The presence of iron in the oxide layer is interesting since it is absent in the as-processed material composition. It certainly results from the dissolution of the autoclave itself, and from diffusion of iron cations through the compact oxide scale from the simulated primary water to the alloy/oxide interface. Finally, one can note the absence of chromium depletion zone under the oxide scale.

3.2.2. Alloy 690

3.2.2.1. 66 h corrosion test. Fig. 5a shows STEM-HAADF images of the oxide film developed on Alloy 690 exposed 66 h. Although the oxide scale is very thin, deep insights on images allow to distinguish its duplex structure. The external layer is composed of fine crystallites of about 10 nm average size. The internal layer is rather compact and continuous with approximately 5 nm average thickness. Occasional oxide penetrations in the matrix

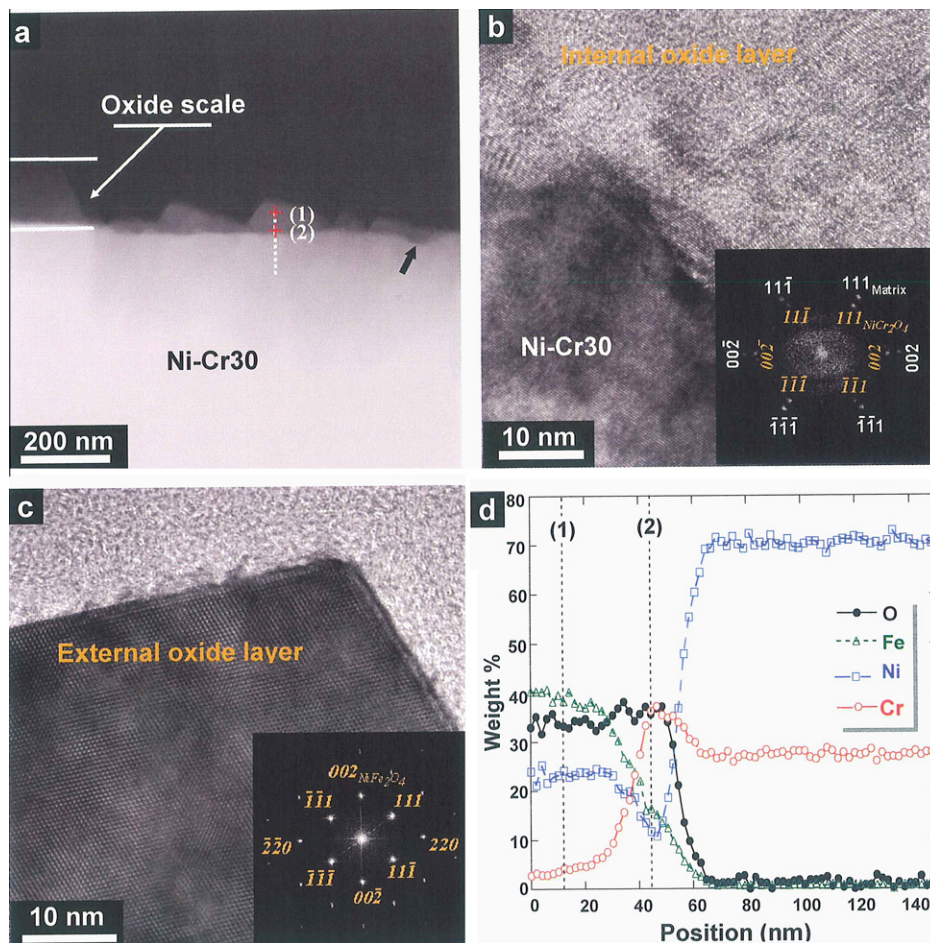


Fig. 4. STEM-HAADF (a) and HRTEM (b and c) images of the oxide layer developed on Ni-30Cr alloy exposed 858 h showing the large crystallites forming the external oxide layer and the underlying continuous and compact internal layer. Oxide penetrations are also visible (black arrow in 4a). Fourier transform diffractograms analysis established the NiCr_2O_4 -structure of the internal layer in parallel orientation with the metal (inset in 4b) and the NiFe_2O_4 -structure of the large external crystallites (inset in 4c). (d) EDX compositional profiles taken using a nanometric electron probe across the oxide layer as illustrated in 4a (the atomic compositions are given at the points marked (1): 23%Fe, 12%Ni, 1%Cr, 64%O and (2): 8%Fe, 4%Ni, 22%Cr, 66%O). Fe certainly comes from the dissolution of the autoclave metal and diffuses in the oxide layer from the simulated primary water.

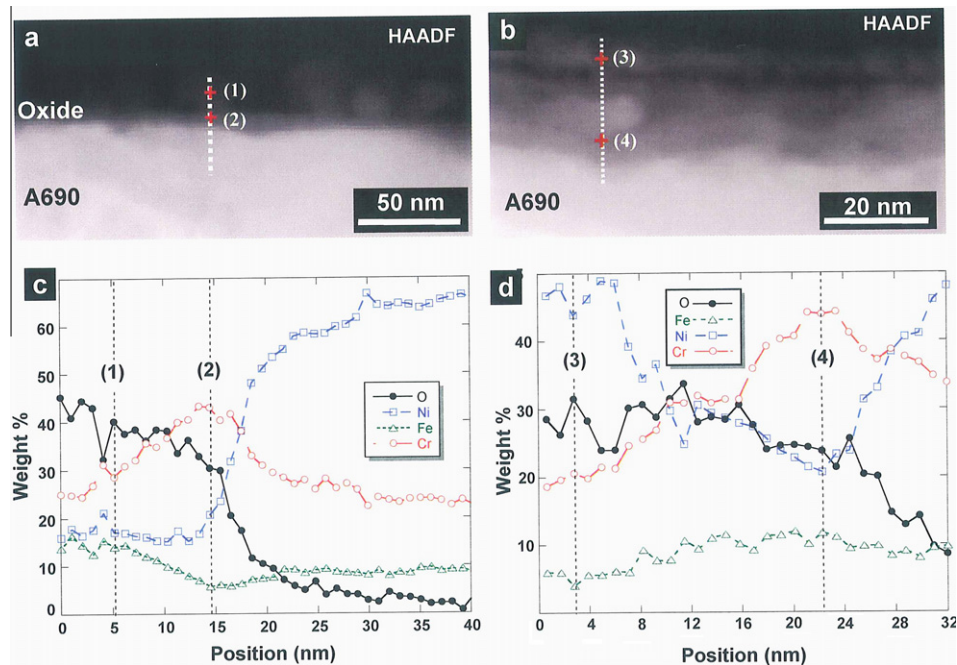


Fig. 5. (a) and (b) STEM–HAADF images obtained on the oxide layer developed on Alloy 690 exposed 66 h and 112 h, respectively in PWR simulated primary water; (c) EDX compositional profiles revealing the slight Fe-enrichment of the outer crystallites and Cr-enrichment of the inner continuous layer (the atomic compositions are given at the points marked (1): 8%Fe, 12%Ni, 18%Cr and 62%O and (2): 3%Fe, 12%Ni, 26%Cr, 59%O); and (d) EDX compositional profiles indicating a Ni-enrichment of the outer part of the oxide scale and Cr-enrichment of the inner part with atomic concentrations in agreement with $\text{Ni}_{(1-x)}\text{Fe}_x\text{Cr}_2\text{O}_4$ composition (the atomic compositions are given at the points marked (3): 4%Fe, 27%Ni, 13%Cr and 56%O and (4): 7%Fe, 14%Ni, 31%Cr and 48%O).

were also observed conferring a rough aspect to the oxide/matrix interface.

EDX compositional profiles realized across the oxide layer are presented in Fig. 5c. Concerning the fine external crystallites, element atomic concentrations are in agreement with a mixed iron and nickel chromite ($\text{Ni}_{(1-x)}\text{Fe}_x\text{Cr}_2\text{O}_4$) while the internal compact layer is rather enriched in Cr. Furthermore, oxide penetrations were particularly rich in Cr (50 wt.%) and would be of Cr_2O_3 composition as it was established in the case of Ni–30Cr alloy (see Section 3.2.1.1).

3.2.2.2. 112 h corrosion test. The oxide scale developed on Alloy 690 exposed 112 h is shown in Fig. 5b. It seems composed of two superimposed layers. The outer one consists in a thin and granular layer of about 10 nm average thickness. The inner layer, whose average thickness is about 15 nm, exhibits a rather compact structure with occasional oxide penetrations in the alloy.

EDX line-scan analyses were realized across the oxide scale and the obtained composition profiles are plotted in Fig. 5d. They reveal a Ni-enrichment of the external oxide layer similar to the case of Ni–30Cr alloy corroded 164 h, which may indicate a formation of a nickel hydroxide. The internal layer is rather chromium enriched with atomic concentrations in agreement with a mixed iron and nickel chromite ($\text{Ni}_{(1-x)}\text{Fe}_x\text{Cr}_2\text{O}_4$).

3.2.2.3. 858 h corrosion test. TEM micrographs obtained on the oxide film developed on Alloy 690 exposed 858 h are shown on Fig. 6a–d. As in the case of Ni–30Cr alloy, the duplex structure is clearly visible. The external oxide layer is composed of scattered crystallites, which can be divided into two families: large crystallites with sizes greater than 100 nm and small crystallites with sizes not exceeding few tens of nanometers (Fig. 6a). The internal layer exhibits a more continuous and compact aspect with a roughly constant thickness around 60 nm. Deep insight on the oxide/matrix interface (Fig. 6b) highlights the presence of small nodules distributed along the interface (white arrow).

Fig. 6c shows a HRTEM image obtained at the interface between the external and the internal oxide layers. The indexation of the corresponding FFT diffractogram (see inset) established the spinel NiCr_2O_4 and NiFe_2O_4 structures of the internal and the external layers, respectively. Moreover, an orientation relationship between both oxide layers was established:



Fig. 6d highlights the inner interface between the oxide scale and the alloy showing a Cr_2O_3 nodule and evidences the epitaxy relationships (see inset) between the NiCr_2O_4 -structure internal layer and the metal as:



EDX chemical analysis made across the oxide scale of Fig. 6e confirmed the chromium enrichment (43 wt.%) of the internal layer, with element concentrations in agreement with a mixed iron and nickel chromite ($\text{Ni}_{(1-x)}\text{Fe}_x\text{Cr}_2\text{O}_4$) (Fig. 6f). Furthermore, and as expected, the large external crystallites are Fe-enriched, with element concentrations in agreement with $(\text{Ni}_{(1-2z)}\text{Fe}_{(2+z)}\text{O}_4)$ composition. Finally, the concentration profiles did not reveal any Cr-depleted zone below the oxide scale.

4. Discussion

4.1. Thermodynamic considerations

The experimental TEM study has pointed out the different phases, which can be formed during the oxidation of Ni-base alloys in PWR primary conditions. These results can be compared with the ones obtained by the thermodynamic calculations on the oxides stability in identical conditions. The thermodynamic work

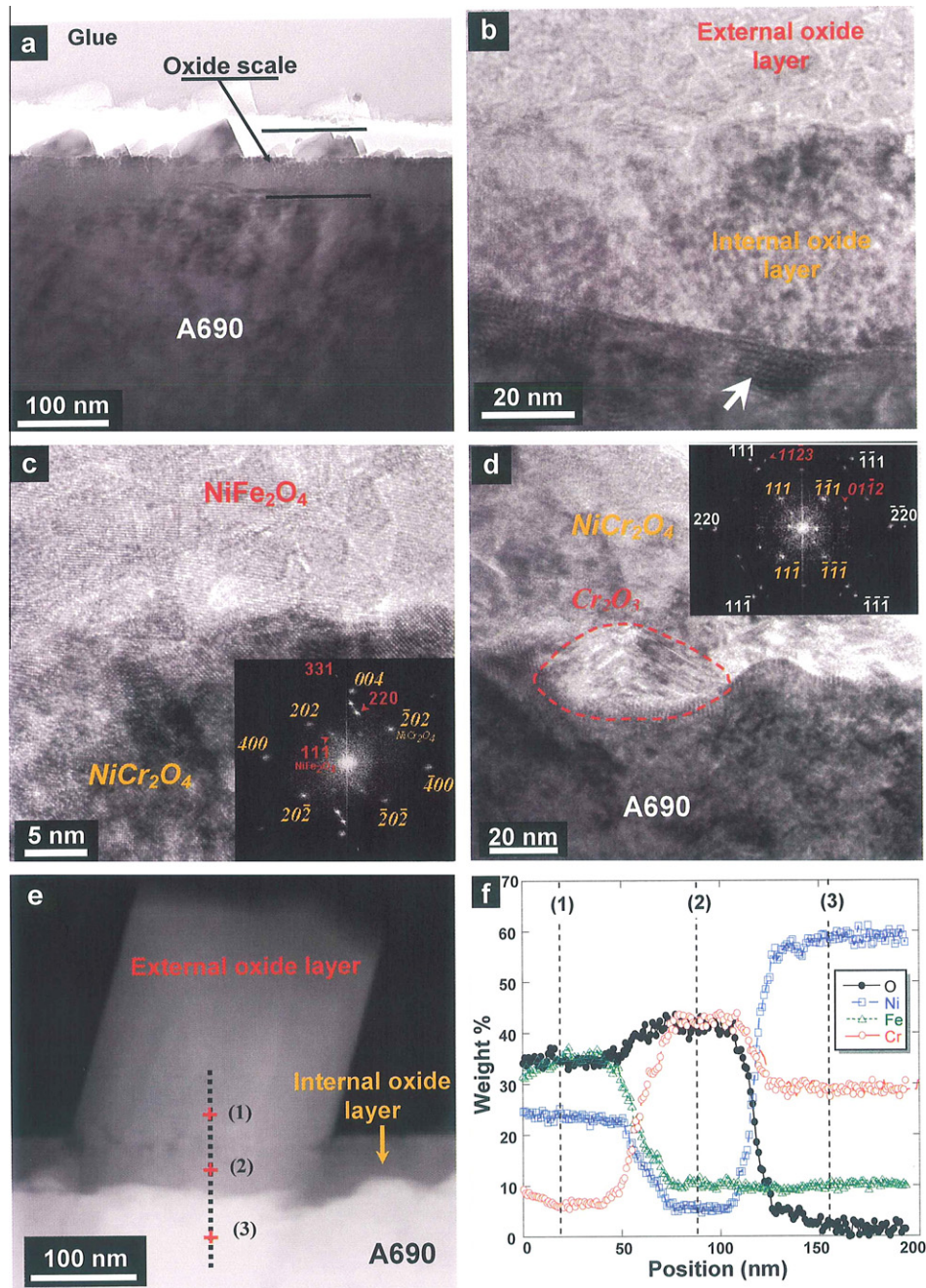


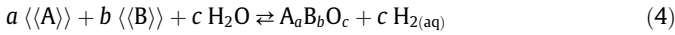
Fig. 6. TEM (a) and HRTEM (b and c) images of the oxide layer developed on Alloy 690 exposed 858 h showing the large crystallites forming the external oxide layer and the continuous and compact internal layer. Analysis of image FFT diffractograms (inset in 6c) established the NiCr_2O_4 -structure of the internal layer and the NiFe_2O_4 -structure of the large crystallites with orientation relationships between both layers; (d) HRTEM image and corresponding FFT diffractogram showing epitaxy between Cr_2O_3 -structure nodules (dashed-line delimited zone) and spinel NiCr_2O_4 -structure internal layer at the oxide/alloy interface. (e) HAADF image of the cross-section of the oxide scale developed on Alloy 690 exposed 858 h; and (f) EDX compositional profiles across the oxide layer and the alloy as illustrated in (e) (the atomic compositions are given at the points marked (1): 19%Fe, 11%Ni, 4%Cr, 65%O, (2): 5%Fe, 3%Ni, 22%Cr, 70%O and (3): 10%Fe, 58%Ni, 32%Cr).

were performed on the Ni–Cr–Fe–H₂O–H₂ system and applied to the case of Alloy 690. Several assumptions are needed in order to perform the calculation.

- The alloy is supposed to be an ideal solid solution in which the activity of each constituent is equal to its molar fraction. The oxides are supposed to be pure in their phase. Their activity is equal to 1. The variation of their standard chemical potential with the temperature is calculated based on data of Knacke et al. [15]. It is supposed that these chemical potentials are independent of pressure.

- The standard chemical potential of aqueous species in high temperature aqueous water is supposed to depend of pressure, as proposed by Shock et al. [16–18] in the HKF (Helgeson–Kirkham–Flowers) revised model. The standard chemical potential of liquid water is calculated as a function of temperature and pressure from IAPWS (International Association for the Properties of Water and Steam) formulation [19]. For each temperature, the pressure is the one corresponding to the liquid–vapor equilibrium. The standard chemical potential of dissolved hydrogen in aqueous solution is calculated as a function of temperature and pressure from the revised HKF model [16–18].

The oxidation reaction of a binary alloy (A and B) with aqueous water at high temperature can be written as:



The reaction Gibbs energy associated to this reaction at a temperature T and a pressure P is given by:

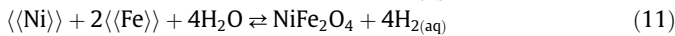
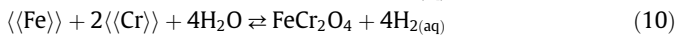
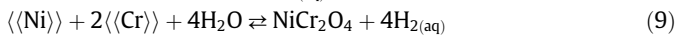
$$\Delta G(T, P) = \Delta G^0(T, P) + RT \ln \frac{a_{\text{H}_2(\text{aq})}^c}{a_{\langle\langle A \rangle\rangle}^a a_{\langle\langle B \rangle\rangle}^b a_{\text{H}_2\text{O}}^c} \quad (5)$$

where $\Delta G^0(T, P)$ is the standard reaction Gibbs energy, R is the ideal gas constant, $a_{\text{H}_2(\text{aq})}$ is the dissolved hydrogen activity, $a_{\langle\langle A \rangle\rangle}$ is the activity of the metal A in the alloy, $a_{\langle\langle B \rangle\rangle}$ is the activity of the metal B in the alloy, $a_{\text{H}_2\text{O}}$ is the water activity and a, b, c are the stoichiometric coefficients of reaction. Then, it is possible to calculate the water activity on hydrogen activity ratio, which can be considered as an oxidizing potential:

$$\frac{a_{\text{H}_2\text{O}}}{a_{\text{H}_2(\text{aq})}} = \left(a_{\langle\langle A \rangle\rangle}^a a_{\langle\langle B \rangle\rangle}^b e^{-\frac{\Delta G_0(T, P)}{RT}} \right)^{-\frac{1}{c}} \quad (6)$$

It has to be noted that the Eqs. (4)–(6) are also helpful for the calculation of the oxidizing potential of a sole metal A by considering b equal to 0.

The oxidation reactions, which were taken into account for the thermodynamic calculations, are the following ones:



Using the formulae and the assumptions described above, the oxidizing potential was calculated for each oxidation reaction and represented as a function of temperature on Fig. 7a and b, in the case of Alloy 690. In addition, the oxidizing potential (in the present experimental conditions and its upper and lower limits for PWR primary nominal conditions) was drawn on Fig. 7. For this, the activity of water, this time being the solvent, was taken equal to 1 and the activity of dissolved hydrogen was taken equal to its concentration in water. This concentration was calculated from the partial pressure of hydrogen in equilibrium with the aqueous phase and using the Henry constant of hydrogen, which varies in function of temperature and pressure [20].

From the calculations and stability diagrams presented in Fig. 7a, a thermodynamic classification of the oxides can be extracted, rating them by decreasing stability:



It has to be noted that NiO is not stable in our experimental conditions (Fig. 7b), which well agrees with our results. From the stability diagrams it comes also that, except NiO, all the other oxides taken into account are likely to grow during the exposition of this kind of nickel-base alloys in PWR primary water conditions.

Besides, it appears that the succession of stability domains of each oxide in function of the oxidizing power fits well the sequence of the multi-layer structure that was evidenced earlier by TEM observations. The more stable oxides were indeed situated at the inner interface (Cr_2O_3 nodules) whereas the less stable ($\text{Ni}_{(1-z)}\text{Fe}_{(2+z)}\text{O}_4$ precipitates) were found at the outermost interface. Between these two oxides, the formation of a compact scale of iron and nickel mixed chromite is consistent with thermodynamic calculations.

Moreover, HRTEM analysis evidenced the presence of partially hydrated nickel hydroxide in the external layer, and one could

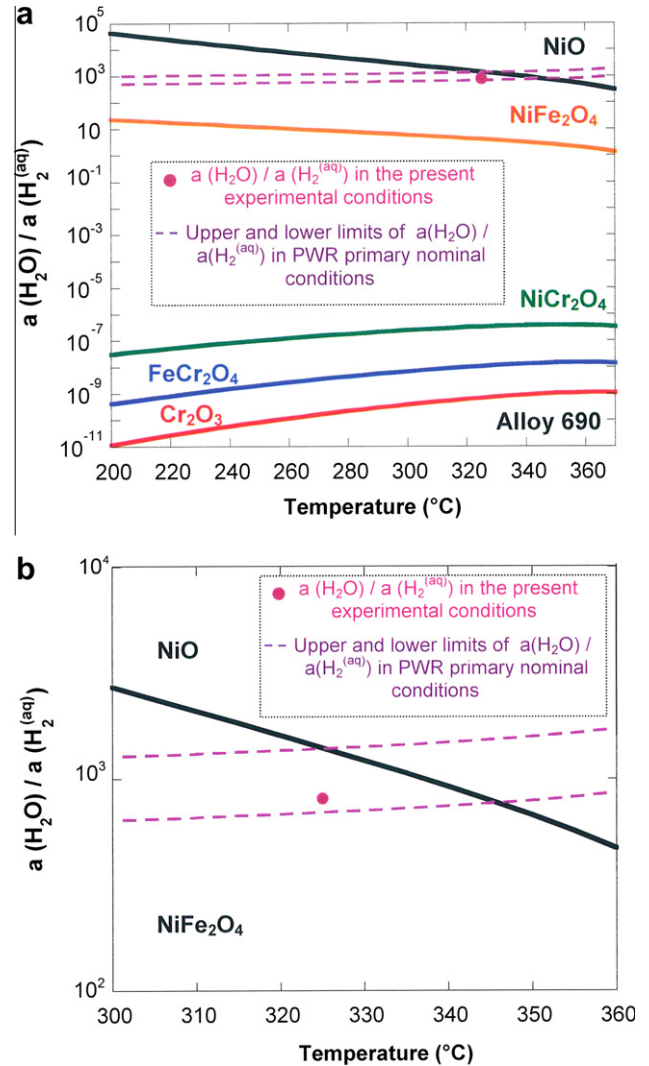
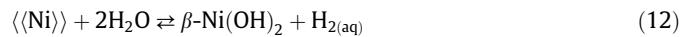


Fig. 7. (a) Stability diagram of the oxides which are likely to form during the exposition of Alloy 690 in PWR primary water type media in function of temperature; and (b) an enlargement at the vicinity of the equilibrium oxidizing power for the formation of NiO.

question its stability. The following reaction of $\beta\text{-Ni}(\text{OH})_2$ formation can be used in order to discuss the thermodynamic stability of nickel hydroxide :



Based on thermodynamic data published for $\beta\text{-Ni}(\text{OH})_2$ [21–23] and on assumptions previously discussed, the variation of Gibbs energy for reaction (12) in our experimental conditions can be plotted as a function of temperature (Fig. 8). Fig. 8 shows that, in the range of temperature considered, $\beta\text{-Ni}(\text{OH})_2$ is never a stable corrosion product of the two nickel-base alloys studied. It can also be pointed out that, in our experimental conditions, the predominant aqueous form of nickel cations is the neutral aqueous complex $\text{Ni}(\text{OH})_{2(\text{aq})}$ [21]. The partially hydrated nickel hydroxide characterized by TEM could therefore be due to precipitation of a metastable phase.

4.2. The multilayered structure in detail

A schematic view of this multilayered structure is presented in Fig. 9. This structure can be divided in two parts: an external discontinuous layer and a compact protective inner layer. The

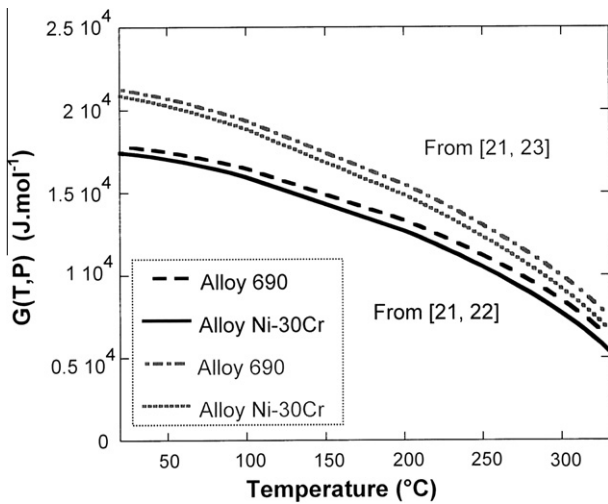


Fig. 8. Evolution of free reaction enthalpy for β -Ni(OH)₂ formation versus temperature for the alloys 690 and Ni-30Cr in our experimental conditions using data published in [21–23].

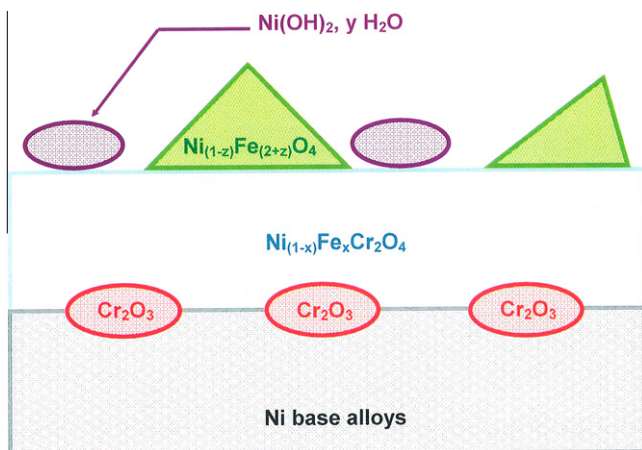


Fig. 9. Schematic view of the oxide scale that forms during the exposition of Ni-base alloys in PWR primary water.

presence, formation, composition and growth of each sub-layer will now be detailed and discussed.

4.2.1. External layer

The external layer is composed of nickel ferrite crystallites, whose size can reach the micrometric scale, and whose composition seems to depend on the nickel and iron concentrations present in the aqueous solution. Two observations suggest that the formation of these crystallites results, at least partially, from a precipitation phenomenon. Firstly, they form at the surface of the Ni-30Cr alloy, which does not contain any Fe. Second, the number of crystallites per surface unity could be drastically reduced almost until complete disappearing when the ion-exchange resins worked in optimal conditions, as showed by the SEM observation of the sample surface.

The influence of the surface defects and of the crystalline orientation of the alloy on the nucleation and/or growth of these crystallites was observed. More than that, these influences propagate across a continuous layer. This can be explained, in the case of surface defects, by the low thickness of this protective layer, which is not sufficient enough to fade the marks of the alloy initial surface.

Concerning the influence of the alloy crystalline orientation, it can be explained by the existence of two successive epitaxy relationships, between the alloy and the chromite layer, then between the chromite and the ferrite crystallites (observed by TEM). These results on the nature of the crystallites and the influence of the surface state or of the concentration in iron or nickel cations on their nucleation and growth are in overall good agreement with the literature [9,10,12,24,25].

The presence of nickel hydroxide in the external layer was identified by XPS by several authors [9–11]. This hydroxide, partially hydrated, has also been identified in this study, in one case, by HRTEM characterizations (Fig. 3c). It seems to form a discontinuous layer, constituted of globulous-looking aggregates of few nm. The thermodynamic considerations discussed above permit to propose that the solid Ni(OH)₂, yH₂O exists in a metastable state in our high temperature aqueous hydrogenated media, and that its formation could result from the precipitation of the neutral aqueous complex Ni(OH)_{2(aq)}. The issue about the final stable state of this precipitate is raised.

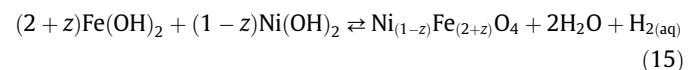
In experimental conditions close to those used in this work, Carrette [10] has observed, by XPS, the formation of iron hydroxide in the oxide layer formed on Alloy 690. In the same way than in the case of nickel hydroxide, in this type of experimental conditions, solid iron hydroxide was not stable, contrary to the neutral aqueous complex Fe(OH)_{2(aq)}, which is the stable form of iron cations in solution [26].

Based on these various data, it is suggested that the precipitation of nickel or iron hydroxides could be an intermediate step in the formation of the stable precipitate. By analogy with the Schikorr reaction used in literature to describe the growth of magnetite from iron hydroxide in the case of high temperature aqueous corrosion of stainless steels [27], or in the case of the growth of nickel ferrite [28–30], a growth mechanism of Ni_(1-z)Fe_(2+z)O₄ taking into account the role of metastable iron and nickel hydroxide could be proposed.

The release of Fe and Ni cations in the media may lead to local sursaturation at the vicinity of the surface of the oxidized alloy. The formation of metastable solid nickel and iron hydroxides on the surface could result from precipitation of the stable neutral aqueous complex, following reactions like:



Once formed on the protective oxide scale, these metastable hydroxides may diffuse in surface to preferential sites, where nucleation or growth of nickel ferrite may occur:



Such a mechanism resulting from precipitation phenomena due to local sursaturation would be able to describe the influence of the concentrations of Fe and Ni cations in the solution on the stoichiometry of nickel ferrite.

4.2.2. Internal continuous layer

The protective part of the multilayered structure mainly consists of a compact oxide layer, whose crystallographic structure corresponds to the spinel type nickel chromite. STEM-EDX analysis have evidenced a link between the composition of this layer and the amount of iron, nickel and chromium in the medium studied, so that this oxide was described as a mixed nickel and iron chromite, whose formula can be written as: Ni_(1-x)Fe_xCr₂O₄.

The presence, inside the oxide layer growing on nickel-base alloys exposed to PWR primary water conditions, of a spinel type chromite has already been suggested by many authors [6,10,25].

Moreover, it was shown undoubtedly here, thanks to the TEM observations, that this spinel type chromite constitutes the only continuous layer evidenced in the framework of this study. It has to be noted that its chemical composition depends on the cations in solution in the primary simulated media. As shown in Fig. 6, iron is present in the chromite spinel formed on Ni–30Cr alloy although this alloy is iron free.

Coupling HRTEM and STEM–EDX observations revealed also the presence of Cr₂O₃ nodules, which were almost periodically dispersed at the inner chromite/alloy interface. These results complete some literature, in which an enriched chromium continuous layer, or Cr₂O₃, has been proposed [6,10,11,25]. In addition, no chromium depleted zone was ever observed across the underlying alloy close to the chromite/metal interface, contrarily to some previous works [6,10,11,25], in which a chromium depletion in the underlying alloy close to the interface has been observed. This difference can be explained by the surface defect density of the different samples, used in the different works, which could play a role on the nucleation and growth of Cr₂O₃ and consequently on the chromium depleted zone in alloy sub-surface.

5. Conclusions

The multi-layer oxide structure formed during corrosion of nickel-base alloys in PWR primary simulated media has been characterized by SEM and advanced TEM techniques. The internal layer can be divided into a continuous film of Ni_(1-x)Fe_xCr₂O₄, in which the content of Fe and Ni is dependent on the concentrations of Fe and Ni cations in the solution, and nodules of Cr₂O₃ dispersed at the alloy/oxide interface. The external layer is composed of a nickel ferrite and Ni hydroxide, their growth resulting from precipitation phenomena. The precipitation of Ni hydroxide may be an intermediate step in the nucleation and growth of Ni_(1-z)Fe_(2+z)O₄. A mechanism, involving the formation of metastable Ni and Fe hydroxides, was proposed, which permits to understand the link between the concentrations of Fe and Ni cations in the media and the content of these elements in the nickel ferrite.

These results permit to propose a multi-layer structure, which gives a coherent description of the oxide scale formed on Ni-base alloys during corrosion tests carried out in this study. They also highlight divergences with other studies [6,10,12,25], notably in terms of structure of the protective oxide scale and chromium depletion in the basis material. In particular, the existence or not of a continuous Cr₂O₃ thin layer could be of great importance as far as the question of release of Ni and Fe cations from the oxide towards the primary water is concerned. In order to clarify these points, a study of the growth mechanism of protective oxide must be done and is the subject of further works.

References

- [1] N.S. McIntyre, D.G. Zetaruk, D. Oven, J. Electrochem. Soc. 126 (1979) 750–760.
- [2] L. Guinard, O. Kerrec, D. Noel, S. Gardey, F. Coulet, Nucl. Energy 36 (1997) 19–27.
- [3] F. Carrette, M.C. Lafont, G. Chatainier, L. Guinard, B. Pieraggi, Surf. Interface Anal. 34 (2002) 135–138.
- [4] F. Carrette, L. Guinard, B. Pieraggi, in: Proceedings of the International Conference on water Chemistry of Nuclear Reactor Systems, Operation Optimisation and New Developments, 2002.
- [5] A. Machet, A. Galtayries, P. Marcus, P. Combrade, P. Jolivet, P. Scott, Surf. Interface Anal. 34 (2002) 197–200.
- [6] F. Carrette, M.C. Lafont, L. Legras, L. Guinard, B. Pieraggi, Mater. High Temp. 20 (2003) 581–591.
- [7] A. Machet, A. Galtayries, S. Zanna, L. Klein, V. Maurice, P. Jolivet, M. Foucault, P. Combrade, P. Scott, P. Marcus, Electrochim. Acta 49 (2004) 3957–3964.
- [8] F. Delabrouille, B. Viguier, L. Legras, E. Andrieu, Mater. High Temp. 22 (2005) 287–292.
- [9] S. Gardey, Etude de la corrosion généralisée des alliages 600, 690 et 800 en milieu primaire, Contribution à la compréhension des mécanismes, Ph.D. Thesis, University of Paris VI, 1998.
- [10] F. Carrette, Relâchement des produits de corrosion des tubes en alliage 690 de générateur de vapeur du circuit primaire des réacteurs à eau pressurisée, Ph.D. Thesis, Polytechnic National Institute of Toulouse, 2002.
- [11] A. Machet, Etude des premiers stades d'oxydation d'alliages inoxydables dans l'eau à haute température, Ph.D. Thesis, University of Paris VI, 2004.
- [12] F. Delabrouille, Caractérisation par MET de fissures de corrosion sous contraintes d'alliages à base de nickel: influence de la teneur en chrome et de la chimie du milieu, Ph.D. Thesis, Polytechnic National Institute of Toulouse, 2004.
- [13] A. Machet, A. Galtayries, S. Zanna, P. Jolivet, M. Foucault, P. Combrade, P. Scott, P. Marcus, in: Proceedings of the EUROCORR, Nice, France, 2004.
- [14] J. Panter, B. Viguier, J.-M. Cloué, M. Foucault, P. Combrade, E. Andrieu, J. Nucl. Mater. 348 (2006) 213–221.
- [15] O. Knacke, O. Kubaschewski, K. Hesselmann (Eds.), Thermochemical Properties of Inorganic Substances, Springer-Verlag, Berlin, Germany, 1991.
- [16] J.C. Tanger, H.C. Helgeson, Am. J. Sci. 288 (1988) 19–98.
- [17] E.L. Shock, H.C. Helgeson, Geochim. Cosmochim. Acta 52 (1988) 2009–2036.
- [18] E.L. Shock, H.C. Helgeson, D.A. Sverjensky, Geochim. Cosmochim. Acta 53 (1989) 2157–2183.
- [19] W. Wagner, J.R. Cooper, A. Dittmann, J. Kijima, H.J. Kretzschmar, A. Kruse, R. Mareš, K. Oguchi, H. Sato, J. Stöcker, O. Sifner, Y. Takaishi, I. Tanishita, J. Trubenbach, T. Willkommen, J. Eng. Gas Turb. Power 122 (2000) 150–182.
- [20] R. Fernández-Prini, J.L. Alvarez, A.H. Harvey, J. Phys. Chem. Ref. Data 32 (2003) 903–916.
- [21] B. Beverskog, I. Puigdomenech, Corros. Sci. 39 (1997) 969–980.
- [22] N.V. Plyasunova, Y. Zhang, M. Muhammed, Hydrometallurgy 48 (1998) 43–63.
- [23] H. Gamjäger, H. Wallner, W. Preis, Monatsh. Chem. 133 (2002) 225–229.
- [24] C. Soustelle, M. Foucault, P. Combrade, K. Wolski, T. Magnin, PWSCC of alloy 600: a parametric study of surface film effects, in: Proceedings of the Ninth International Symposium on Environmental Degradation of Materials in Nuclear Power Systems – Water Reactors, Newport Beach, USA, 1999.
- [25] J. Panter, Etude de la corrosion sous contrainte des alliages 690 et 600 en milieu primaire des REP, Influence des procédés de fabrication des tubes de générateur de vapeur sur la phase d'amorçage, Ph.D. Thesis, Polytechnic National Institute of Toulouse, 2002.
- [26] B. Beverskog, I. Puigdomenech, Corros. Sci. 38 (1996) 2121–2135.
- [27] P. Berge, Influence des traitements de surface sur la résistance à la corrosion des aciers inoxydables, Ph.D. Thesis, University of Paris, 1968.
- [28] Y.L. Sandler, R.H. Kunig, Nucl. Sci. Eng. 64 (1977) 866–874.
- [29] Y. Hanzawa, D. Hiroishi, C. Matsuura, K. Ishigure, Nucl. Sci. Eng. 124 (1996) 211–218.
- [30] Y. Nishino, T. Sawa, In-situ measurement of NiFe₂O₄ formation from iron hydroxides and oxides, in: Proceedings of the JAIF International Conference on Water Chemistry in Nuclear Power Plants – Operational Experience and New Technologies for Management, Tokyo, Japan, 1988.